

MOBRIDGE, SD | 1:00 PM | FEBRUARY 23, 2024



THE FORTY-FORTH ANNUAL
PRODUCTION SALE

BEITELSPACHER RANCH

2024

BEITELSPACHER RANCH

ANNUAL PRODUCTION SALE

FRIDAY, FEBRUARY 23, 2024

SALE LOCATION:

Mobridge Livestock Market,
221 Fourth Ave E., Mobridge, SD
(800) 658-3598 or (605) 845-3622

AUCTIONEER:

Seth Weishaar (605) 210-1124

SALE AGENTS:

Casey Perman, Mobridge Livestock (605) 848-3338
Kirby Goettsch, Farm & Ranch Guide (605) 380-3939

SALE CONSULTANTS:

Mark Beitelspacher (605) 281-1055
Bryce Beitelspacher (605) 281-1627
Brady Beitelspacher (605) 281-9648
Bruce Gordon (605) 645-0311

INSURANCE:

Martin-Trudeau Insurance 1513 W Elm, Mitchel, SD
(605) 996-3106

HEALTH CONSULTANT:

Holly Roe Johnson - Hosmer Vet Clinic (605) 283-2278

FEED CONSULTANTS:

Erik Tesh - Dakotaland Feeds (605) 960-6936
Brandon Beitelspacher - B&B Feeds (605) 848-0700

RANCH STAFF:

Randy Reuer and Ashton Hartling

PHOTOGRAPHY:

Riley Zoss Photography (605) 630-8895

TERMS AND CONDITIONS:

All cattle sell under the Terms and Conditions as recommended by the American Angus Association. No cattle will be transferred, delivered, or released without full payment or arrangements made. All bulls are guaranteed to be functionally sound breeders.

VIEWING:

Bulls will be located at the ranch and are available for viewing prior to the sale upon request. Thursday, the night prior to the sale, bulls will be transported to Mobridge Livestock and ready for viewing Friday morning.

TRANSPORTATION:

We will offer \$100 dollars off each bull purchased that goes home with the buyer the day of the sale. Bulls will be housed free of charge at Beitelspacher Ranch until May 1, 2024. After that date, we will charge a rate of \$2.50 per head per day.

TAGGING AND LOT NUMBERS:

Green tags identify Sim-Sim Angus and Blue tags are PB Angus. Lot tags correspond with bulls' lot numbers in the catalog.

ONLINE BIDDING:

View the sale online at dvauction.com & click on the Beitelspacher Ranch tab.

LODGING:

Wrangler Inn (605) 845-3641
820 W Grand Crossing
Mobridge, SD 57601

Mobridge Kountry Inn (605) 845-7215
1301 W Grand Crossing
Mobridge, SD 57601

Dave's East Side Motel and Cabins (605) 845-7867
510 7th Ave E
Mobridge, SD 57406

Mo-Rest Motel (605) 845-3668
706 W Grand Crossing
Mobridge, SD 57601

DVAuction
Broadcasting Real-Time Auctions

FIND US ONLINE AT:
BRBEEF.COM OR OUR
BR BEEF FACEBOOK PAGE



WELCOME!

Welcome to the Beitelspacher Ranch annual production sale. We feel this year's offering is the deepest set of bulls we have ever offered. Highlight to this year's offering will be the direct sons of Outlaw - including two full sibs to the hot new Simmental bull called Next Level. This group alone is well worth making the trip sale day, you won't be disappointed.

Our main goal is to produce cattle that are efficient in the pasture, as well as in the feed yard. We emphasize the longevity of the cattle we produce. Bulls have been developed on a high roughage ration, and we would encourage you to do the same when transitioning them into your operation.

The sale and videos of the bulls in the sale will be on DVAuction once again this year. We would encourage you to stop by or check them out at the farm or online prior to sale day.

Time sure does fly by. Bryce has finished his education at SDSU and is now at home full-time. Brady is a senior at Bowdle High School and has plans to attend college this fall. I am so grateful to have two wonderful kids.

The boys reached their ultimate goal this summer by



exhibiting the Overall Grand Champion Market Steer at the 2023 South Dakota State Fair. It was the inaugural year in the new DEX complex in Huron, South Dakota. We are so proud of them.

We continue the U-Haul at rebate, but increased it to \$100. So please bring a trailer on sale day to take your purchase home. If you so choose, we can also keep your purchases at the ranch free of charge through May 1. After that date, we will charge a rate of \$2.50 per head per day. On the day of sale we will cover 50% of your insurance purchases. A representative from Martin Trudeau will be on hand to help you with this. Their insurance plan protects your investment from things that are out of our control. If you have any more questions, please talk to Ray himself.

Thank you for your continued trust in Beitelspacher Ranch. We look forward to seeing you on sale day.

Mark Beitelspacher



KRJ DAKOTA

KRJ DAKOTA OUTLAW IS THE SIRE OF LOTS 1-33.

Outlaw

01 BR MR. LAW & ORDER 8144 L

ASA REG # 4313459

RUBY'S TURNPIKE 771E

KRJ DAKOTA OUTLAW GP74 P.B. SM

REG. 36332499

BRKC DAPHNE DY37

PROFIT

KRJ F8144 - PB SM

DOUBLE J MISS T 739

%	PB SM
BD	3-9-23
ACT. BW	75
ADJ. WW/ RATIO	889/ 117
ADJ YW/ RATIO	1540/ 116
SCROTAL	41.5
ADG	4.1



DAM OF LOT 1, DONOR DAM OF LOTS 5 & 29.

BR Law and Order is one of the most impressive bulls to be born on the ranch. Quite frankly, I strongly believe this is one of the best Dakota Outlaw sons I have seen to date. The amount of muscle shape and structural correctness this guy combines while still being one of the best numbered bulls is the sale is overwhelming. We are retaining 1/3 of the semen rights on BR Law and Order and look forward to using this bull on a variety of cows in our operation.



NEXT *Level*

NEXT LEVEL IS THE FULL BROTHER TO LOT 2 & LOT 3.



DONOR DAM OF LOTS 2 & 3;
GRAND-DAM OF LOT 4.

02 BR OUTLAW 3099 L

ASA REG. # 4380596

RUBY'S TURNPIKE 771 E
KRJ DAKOTA OUTLAW G 974 PB SM
REG. 36332499
 BRKC DAPHINE DY37
 WLE BIG DEAL A617
KRDL CAEDENCE C37 - P.B. SM
 JS SURE BET 4T

	%	PB SM ET
BD		3-27-23
ACT. BW	84	
ADJ. WW/RATIO	771/102	
ADJ YW/RATIO	1400/105	
SCROTAL	34	
ADG	3.9	

Two full brothers averaged \$16,000. The genetic potential of these two full sibs is second to none. I could go on and on about how much I love this mating but the bulls speak for themselves. Do not miss your chance to own a piece of the Dakota Outlaw x C37 mating. This is a no doubt investment that is sure to make you money!

03 BR OUTLAW 778 L

ASA REG. # - 4280597

RUBY'S TURNPIKE 771 E
KRJ DAKOTA OUTLAW G 974 PB SM
REG. 36332499
 BRKC DAPHINE DY37
 WLE BIG DEAL A 617
KRDL CAEDENCE C-37 - PB SM
 JS SURE BET 4 T

	%	PB SM ET
BD		4-6-23
ACT. BW	85	
ADJ. WW/RATIO	720/95	
ADJ YW/RATIO	1272/96	
SCROTAL	33	
ADG	3.4	

Two full brothers averaged \$16,000. The genetic potential of these two full sibs is second to none. I could go on and on about how much I love this mating but the bulls speak for themselves. Do not miss your chance to own a piece of the Dakota Outlaw x C37 mating. This is a no doubt investment that is sure to make you money!



LOT 2



LOT 3



LOT 4

04 BR MR. OUTLAW 949 L
 ASA REG. # - 4280601

RUBY'S TURNPIKE 771E
KRJ DAKOTA OUTLAW GP74 P.B. SM
 REG. 36332499
 BRKC DAPHNE DY37

WHEATLAND BULL 7117E
MISS ALLIANCE 949 G - PB SM
 KRDL CAEDENCE C37

Known as "Yellowstone" around the ranch, lot 4's dam goes back to our infamous c37 donor cow. His dam, miss Alliance 949 is beginning to pick up momentum and follow in her mothers footsteps being able to consistently produce quality cattle that check all the boxes for us. Study this one closely folks he is very correct in every aspect and will produce quality replacement females and easy feeding feeder cattle with a little extra WOW FACTOR.

%	PB SM
BD	4-3-23
ACT. BW	98
ADJ. WW/RATIO	815/ 101
ADJ YW/RATIO	1370/ 105
SCROTAL	34
ADG	3.5

05 BR OUTLAW 388 L
 ASA REG. # - 4313463

RUBY'S TURNPIKE 771 E
KRJ DAKOTA OUTLAW G 974 PB SM
 REG. 36332499
 BRKC DAPHNE DY37

PROFIT
KRJ F 8144 - P.B. SM
 DOUBLE J MISS T 739

This guy can run with the best of them. Has great performance numbers. A bull I thought should've been higher up in the sale order. These Outlaw sons can really perform.

%	PB SM
BD	3-30-23
ACT. BW	89
ADJ. WW/RATIO	838/ 111
ADJ YW/RATIO	1418/ 107
SCROTAL	38
ADG	3.6

06 BR OUTLAW 621 L
 ASA REG. # - 4280609

RUBY'S TURNPIKE 771 E
KRJ DAKOTA OUTLAW G 974 PB SM
 REG. 36332499
 BRKC DAPHNE DY37

JMG COWBOY CUT 810 B
MISS COWBOY 621 D -
1/2 SM 1/2 AN
 MISS REFLECTION 2-053 Z

Lot 6 goes back to an impressive Cowboy Cut cow which has proven to work mating after mating for our program. This bull is ultra extended through his front 1/3 and balances up very appropriately. Gained right at 4lbs a day!

%	3/4 SM 1/4 AN
BD	4-16-23
ACT. BW	90
ADJ. WW/RATIO	806 107
ADJ YW/RATIO	1449 109
SCROTAL	35
ADG	4.0



LOT 6

07 BR OUTLAW 568 L

RUBY'S TURNPIKE 771 E
KRJ DAKOTA OUTLAW G 974 PB SM
REG. 36332499
 BRKC DAPHINE DY37
 SAV FINAL ANSWER 0035
MISS FINAL ANSWER 568 C -
1/2 SM 1/2 AN
 MISS TNT TUITION 2-56ZC

%	3/4 SM 1/4 AN
BD	4-6-23
ACT. BW	92
ADJ. WW/RATIO	821/ 109
ADJ YW/RATIO	1439/ 108
SCROTAL	36.5
ADG	3.9

One of the bigger framed Dakota Outlaw bulls in the offering. Lot 7 is backed by one of my favorite Final Answer cows who has produced multiple sale highlights. Add some frame to your next calf crop with this guy!

08 BR OUTLAW 315 L

RUBY'S TURNPIKE 771 E
KRJ DAKOTA OUTLAW G 974 PB SM
REG. 36332499
 BRKC DAPHINE DY37
 SAV FINAL ANSWER 0035
MISS FINAL ANSWER 5063
C - 1/2 SM 1/2 AMN
 MISS UPGRADE 3060 A

%	3/4 SM 1/4 AN
BD	3-25-23
ACT. BW	80
ADJ. WW/RATIO	778/ 103
ADJ YW/RATIO	1409/ 106
SCROTAL	32.5
ADG	3.9

One of the more stout Outlaw sons in the sale. A really wide based three-quarter blood Simmental. One of the deepest sided bulls in the Outlaw sons. Posted an actual birthweight of only 80 pounds.

09 BR OUTLAW 640 L

ASA REG. # - 4280608

RUBY'S TURNPIKE 771 E
KRJ DAKOTA OUTLAW G 974 PB SM
REG. 36332499
 BRKC DAPHINE DY37
 JMG COWBOY CUT 810 B
MISS COWBOY CUT 640 D -
1/2 SM 1/2 AN
 MISS NEW DESIGN 2-7972

%	3/4 SM 1/4 AN
BD	3-27-23
ACT. BW	80
ADJ. WW/RATIO	766/ 101
ADJ YW/RATIO	1395/ 105
SCROTAL	34.5
ADG	3.9

Even Tara found this bull. When she first saw him, she said, "Wow that's a good one!" Gained right at 4 pounds a day, has over 100 for ratios in weaning and yearling. This three-quarter blood bull is definitely a stand out.

10 BR OUTLAW 786 L

RUBY'S TURNPIKE 771 E
KRJ DAKOTA OUTLAW G 974 PB SM
REG. 36332499
 BRKC DAPHINE DY37
 CONNEALY CAVALRY 1149
MISS CAVALRY 786 E -
1/2 SM 1/2 AN
 MISS BANDO 533 C

%	3/4 SM 1/4 AN
BD	4-4-23
ACT. BW	88
ADJ. WW/RATIO	796/ 105
ADJ YW/RATIO	1497/ 113
SCROTAL	34
ADG	4.4

Second highest average daily gaining bull in the offering. This bull is an absolute tank. Supper soggy made with an excellent set of feet and legs. A true cow mans type of bull here in lot 10!

LOT 9



LOT 10



11 BR OUTLAW 619 L

ASA REG # - 4280606

RUBY'S TURNPIKE 771 E
KRJ DAKOTA OUTLAW G 974 PB SM
REG. 36332499
 BRKC DAPHINE DY37
 WELSHS DEW IT RIGHT 067 T
JBS DEW IT RIGHT 419 D - PB SM
 JBS MS. CRIMSON TIDE 601 B

%	PB SM
BD	3-23-23
ACT. BW	88
ADJ. WW/RATIO	779/ 103
ADJ YW/RATIO	1372/ 103
SCROTAL	36.5
ADG	3.7

Very impressive baldy purebred. Adjusted over 100 on both weaning and yearling ratios. A loose made rugged type of bull who is built for the long haul.



12 BR OUTLAW 333 L

ASA REG. # - 4280611

RUBY'S TURNPIKE 771 E
KRJ DAKOTA OUTLAW G 974 PB SM
REG. 36332499
 BRKC DAPHINE DY437
 GAME Y 131
MISS UPGRADE 333 A -
3/4 SM 1/4 AN
 LAU ISABELLA JJ 1469

%	7/8 SM 1/8 AN REG.
BD	3-27-23
ACT. BW	86
ADJ. WW/RATIO	793/ 105
ADJ YW/RATIO	1306/ 98
SCROTAL	34
ADG	3.2

One of the larger framed Outlaw sons in the sale. Has almost an 800 pound adjusted weaning weight. Goes back to Upgrade on the dam's side. Sure to produce heavy feeder cattle and outstanding females.

13 BR OUTLAW 305 L

RUBY'S TURNPIKE 771 E
KRJ DAKOTA OUTLAW G 974 PB SM
REG. 36332499
 BRKC DAPHINE DY37
 GAME Y 131
MISS UPGRADE 3076 A -
1/2 SM 1/2 AN
 MISS 967 W

%	3/4 SM 1/4 AN
BD	4-17-23
ACT. BW	86
ADJ. WW/RATIO	788/ 104
ADJ YW/RATIO	1310/ 99
SCROTAL	32.5
ADG	3.3

A deep sided, soggy made kind of bull with lots of natural muscle shape.

14 BR OUTLAW 323 L

RUBY'S TURNPIKE 771 E
KRJ DAKOTA OUTLAW G 974 PB SM
REG. 36332499
 BRKC DAPHINE DY37
 FINAL SOLUTION
MISS FINAL SOLUTION 7085 E -
1/2 SM 1/2 AN
 MISS FINAL ANSWER 5048 C

%	3/4 SM 1/4 AN
BD	3-20-23
ACT. BW	85
ADJ. WW/RATIO	766/ 101
ADJ YW/RATIO	1305/ 98
SCROTAL	37.5
ADG	3.4

Don't overlook this guy. He is as good as they get. Both ratios of weaning and yearling right at of 100 and the dam goes back to Final Solution. Sure to produce some high-quality feeder cattle.

15 BR OUTLAW 313 L

RUBY'S TURNPIKE 771 E
KRJ DAKOTA OUTLAW G 974 PB SM
REG. 36332501
 BRKC DAPHINE DY39
 NEW DESIGN 675
MISS NEW DESIGN 4039 B -
1/2 AN 1/2 SM
 MISS REFLECTION 283 Z

%	3/4 SM 1/4 AN
BD	4-8-23
ACT. BW	92
ADJ. WW/RATIO	766/ 101
ADJ YW/RATIO	1297/ 98
SCROTAL	34.5
ADG	3.3

One of the top three-quarter blood Simmental bulls in the sale. His cow is one of our top producers. Over 760 pounds adjusted weaning weight.

**NO MATTER
 YOUR AGE,
 A SNOW HILL IS
 HARD TO RESIST!**





16 BR OUTLAW 767 L

RUBY'S TURNPIKE 771 E
KRJ DAKOTA OUTLAW G 974 PB SM
REG. 36332516
 BRKC DAPHINE DY53
 GAME Y131
MISS UPGRADE 767 E -
3/4 SM 1/4 AN
 MISS UPGRADE 336 A

%	7/8 SM 1/8 AN
BD	3-30-23
ACT. BW	90
ADJ. WW/RATIO	722/ 95
ADJ YW/RATIO	1359/ 102
SCROTAL	40.5
ADG	3.9

A real fancy made Outlaw son that resembles his sire a whole lot. Gained 4 pounds a day. A real correct made, sound bull with a great disposition.

17 BR OUTLAW 856 L

RUBY'S TURNPIKE 771 E
KRJ DAKOTA OUTLAW G 974 PB SM
REG. 36332499
 BRKC DAPHINE DY37
 RUST BULL 311 C
MISS RUST 856 F - 3/4 SM 1/4 AN
 MISS UPGRADE 2-7038 Z

%	7/8 SM 1/8 AN
BD	3-17-23
ACT. BW	94
ADJ. WW/RATIO	720/ 95
ADJ YW/RATIO	1343/ 101
SCROTAL	36
ADG	3.9

A bigger framed Outlaw son. Gained right at 4 pounds a day. You'll want to watch this bull's video he is a standout.



Beitelspacher Ranch is a proud sponsor of the DEC at the South Dakota State Fair. Sharon and Richard's legacy will live on with their representation on the brand wall.

BEITELSPACHER RANCH
ASA #270 IS ONE OF
THE FIRST OPERATIONS
TO HAVE REGISTERED
SIMMENTAL CATTLE

18 BR OUTLAW H12 L

ASA REG. # - 4280602

	%	3/4 SM 1/4 AN
RUBY'S TURNPIKE 771 E	BD	3-30-23
KRJ DAKOTA OUTLAW G 974 PB SM	ACT. BW	91
REG. 36332499	ADJ. WW/ RATIO	765/ 95
BRKC DAPHINE DY37	ADJ YW/ RATIO	1327/ 102
TJ MAIN EVENT 503 B	SCROTAL	36
SYS MS MAIN EVENT H12 -	ADG	3.5
F5/8 SM 3/8 AN		
SYS MS FRONTEIR F 60		

More moderate frame type of bull who goes back to a high performance Main Event cow. I see this bull adding eye appeal and pounds to any group of cows.

19 BR OUTLAW 301 L

	%	3/4 SM 1/4 AN
RUBY'S TURNPIKE 771 E	BD	3-31-23
KRJ DAKOTA OUTLAW G 974 PB SM	ACT. BW	88
REG. 36332499	ADJ. WW/ RATIO	728/ 96
BRKC DAPHINE DY37	ADJ YW/ RATIO	1377/ 104
VAR UPWARD 079	SCROTAL	36.5
MISS UPWARD 3015 A - 1/2 SM	ADG	4.1
1/2 AN		
MISS ARAPHOE 181 Y		

One of the stouter made Outlaw sons in the sale. Gained just over 4 pounds a day. Lots of muscle shape and dimension in this bull!

20 BR OUTLAW 354 L

ASA REG. # - 4280610

	%	3/4 SM 1/4 AN
RUBY'S TURNPIKE 771 E	BD	4-3-23
KRJ DAKOTA OUTLAW G 974 PB SM	ACT. BW	73
REG. 36332499	ADJ. WW/ RATIO	752/ 99
BRKC DAPHINE DY37	ADJ YW/ RATIO	1383/ 104
TNT TANKER U263	SCROTAL	36
MISS TANKER 354 A -	ADG	3.9
1/2 SM 1/2 AN		
MISS VERMILLION DATELINE 763 T		

A bigger framed bull that could work on hieifers. Goes back to a high producing Tanker cow that never misses. Excellent numbered bull.

21 BR OUTLAW 309 L

	%	3/4 SM 1/4 AN
RUBY'S TURNPIKE 771 E	BD	3-22-23
KRJ DAKOTA OUTLAW G 974 PB SM	ACT. BW	88
REG. 36332499	ADJ. WW/ RATIO	723/ 96
BRKC DAPHINE DY37	ADJ YW/ RATIO	1353/ 102
STF ROYAL AFFAIR Z 44 M	SCROTAL	41
MISS ROYAL AFFAIR 6045 D - 1/2	ADG	3.9
SM 1/2 AN		
MISS VERMILLION DATELINE 158 Y		

Larger framed Outlaw son. Goes back to a Royal Affair cow that adds some style in this bull's package that he has to offer. Gained almost 4 pounds a day. This bull will cover a lot of cows.

22 BR OUTLAW 314 L

	%	3/4 SM 1/4 AN
RUBY'S TURNPIKE 771 E	BD	4-6-23
KRJ DAKOTA OUTLAW G 974 PB SM	ACT. BW	90
REG. 36332499	ADJ. WW/ RATIO	700/ 93
BRKC DAPHINE DY37	ADJ YW/ RATIO	1334/ 100
ARAPAHOE 811 A	SCROTAL	34
MISS ARAPAHOE 7023 E -	ADG	4.0
1/2 SM 1/2 AN		
MISS REFLECTION 2210 Z		

Some old-school Simm genetics here with the cow being an Arapahoe. She is one of our top producing cows on the place. Bull gained 4 pounds a day.

23 BR OUTLAW 319 L

	%	3/4 SM 1/4 AN
RUBY'S TURNPIKE 771 E	BD	4-1-23
KRJ DAKOTA OUTLAW G 974 PB SM	ACT. BW	92
REG. 36332502	ADJ. WW/ RATIO	707/ 93
BRKC DAPHINE DY39	ADJ YW/ RATIO	1290/ 97
JMG COWBOY CUT 310B	SCROTAL	41
MISS COWBOY 8063 F -	ADG	3.6
1/2 SM 1/2 AN		
MISS WOODHILL ADMIRAL 0124 X		

One of the bigger, framed Outlaw sons in the offering - big topped, big hiped, and lots of middle. Goes back to a really good Cowboy Cut cow.



The boys are a great team. We appreciate their close relationship. This year, they had the Reserve Champion at the North Dakota State Fair.

24 BR OUTLAW 320 L

RUBY'S TURNPIKE 771 E
KRJ DAKOTA OUTLAW G 974 PB SM
REG. 36332499
 BRKC DAPHINE DY37
 RITO 4L6
MISS RITO 7062 E - 1/2 SM 1/2 AN
 MISS HARB HIPLAIN 0147X

A real honest made bull - a real long sided, nice profiling bull, sure to stretch out and add pounds to your next calf crop.

%	3/4 SM 1/4 AN
BD	3-23-23
ACT. BW	90
ADJ. WW/RATIO	690/91
ADJ YW/RATIO	1328/100
SCROTAL	36
ADG	4.0



25 BR OUTLAW 6-150 L

RUBY'S TURNPIKE 771 E
KRJ DAKOTA OUTLAW G 974 PB SM
REG. 36332499
 BRKC DAPHINE DY37
 MISS 6-150 D - 1/2 SM 1/2 AN

A bigger frame bull that is extra stout and carries a lot of traits we have come to expect when using Dakota Outlaw. Well balanced bull.

%	3/4 SM 1/4 AN
BD	4-7-23
ACT. BW	80
ADJ. WW/RATIO	713/94
ADJ YW/RATIO	1302/98
SCROTAL	33.5
ADG	3.7

26 BR OUTLAW 311 L

RUBY'S TURNPIKE 771 E
KRJ DAKOTA OUTLAW G 974 PB SM
REG. 36332499
 BRKC DAPHINE DY37
 GAME Y 131
MISS UPGRADE 6076 D - 1/2 SM
1/2 AN
 MISS NEW DESIGN 252 Z

An outlaw son that I'm really high on. Goes back to one of our few Upgrade cows that never misses.

%	3/4 SM 1/4 AN
BD	3-29-23
ACT. BW	84
ADJ. WW/RATIO	697/92
ADJ YW/RATIO	1264/95
SCROTAL	35
ADG	3.5

27 BR OUTLAW 746 L

ASA REG. # - 4280607

RUBY'S TURNPIKE 771 E
KRJ DAKOTA OUTLAW G 974 PB SM
REG. 36332499
 BRKC DAPHINE DY37
 JMG COWBOY CUT 810 B
MISS COWBOY 746 E -
1/2 SM 1/2 AN
 MISS PRIORITY 314 A

Another Dakota Outlaw back on a Cowboy Cut cow that is sure to grab you attention. This guy is super loose made and has a true beef bull look to him.

%	3/4 SM 1/4 AN
BD	3-25-23
ACT. BW	71
ADJ. WW/RATIO	693/92
ADJ YW/RATIO	1300/98
SCROTAL	36.5
ADG	3.8

The boys had the Third Over-All Market Animal at South Dakota Summer Spotlight in Huron.



28 BR OUTLAW 784 L

RUBY'S TURNPIKE 771 E
KRJ DAKOTA OUTLAW G 974 PB SM
REG. 36332499
 BRKC DAPHINE DY37

BALDRIDGE COMPASS C041
MISS COMPASS 784 E -
1/2 SM 1/2 AN
 MISS FINAL ANSWER 566 C

%	3/4 SM 1/4 AN
BD	3-29-23
ACT. BW	80
ADJ. WW/ RATIO	692/ 91
ADJ YW/ RATIO	1266/ 95
SCROTAL	34
ADG	3.6

This bull is a real meat wagon. Lotta natural thickness in this bull from head to tail.



29 BR OUTLAW 8042 L

ASA REG. # - 4313461

RUBY'S TURNPIKE 771 E
KRJ DAKOTA OUTLAW G 974 PB SM
REG. 36332499
 BRKC DAPHINE DY37

PROFIT
KRJ F 8144 - PB SM
 DOUBLE J. MISS T 739

%	PB SM ET
BD	4-6-23
ACT. BW	94
ADJ. WW/ RATIO	698/ 92
ADJ YW/ RATIO	1241/ 93
SCROTAL	34
ADG	3.4

A full brother to lot 1! This guy is loaded with quality just a little younger than his full brothers. Give him some time and he will just as good if not better. Possible sale sleeper here!

30 BR OUTLAW 631 L

RUBY'S TURNPIKE 771 E
KRJ DAKOTA OUTLAW G 974 PB SM
REG. 36332499
 BRKC DAPHINE DY37

POWERHOUSE
MISS POWERHOUSE 631 D - AN
 MISS FOCUS 753 T

%	1/2 SM 1/2 AN
BD	3-20-23
ACT. BW	80
ADJ. WW/ RATIO	675/ 89
ADJ YW/ RATIO	1285/ 97
SCROTAL	35.5
ADG	3.8

This bull's dam name says it all. He is a real powerhouse. Complete made, deep sided, athletic. Bigfooted, yet gets out and moves extremely well.

31 BR OUTLAW 303 L

RUBY'S TURNPIKE 771 E
KRJ DAKOTA OUTLAW G 974 PB SM
REG. 36332499
 BRKC DAPHINE DY37

BANDO 1961
MISS BANDO 3083 A -
1/2 SM 1/2 AN
 MISS 8012 V

%	3/4 SM 1/4 AN
BD	3-30-23
ACT. BW	93
ADJ. WW/ RATIO	690/ 91
ADJ YW/ RATIO	1321/ 99
SCROTAL	36.5
ADG	3.9

An Outlaw son that I really like. I like how this bull is put together - smooth shoulder, wide in his pin set, has a great disposition. Gained almost 4 pounds a day. One of the more moderate framed Outlaw sons

32 BR OUTLAW 316 L

RUBY'S TURNPIKE 771 E
KRJ DAKOTA OUTLAW G 974 PB SM
REG. 36332501
 BRKC DAPHINE DY47

BALDRIDGE COMPASS C 041
MISS COMPASS 8041 F -
1/2 SM 1/2 AN
 MISS COWBOY 6006 D

%	3/4 SM 1/4 AN
BD	3-19-23
ACT. BW	93
ADJ. WW/ RATIO	658/ 87
ADJ YW/ RATIO	1296/ 98
SCROTAL	34
ADG	4.0

Gained right at 4 pounds a day. A stout made Outlaw son. Has just a little bit of a nip on his left ear from when he was born. Sure to sire some uniform calves next spring.

33 BR OUTLAW 607 L

RUBY'S TURNPIKE 771 E
KRJ DAKOTA OUTLAW G 974 PB SM
REG. 36332510
 BRKC DAPHINE DY37

SAV FINAL ANSWER 0035
MISS FINAL ANSWER 607 D -
1/2 SM 1/2 AN
 MISS ARAPAHOE 7012 T

%	3/4 SM 1/4 AN
BD	3-29-23
ACT. BW	90
ADJ. WW/ RATIO	648/ 86
ADJ YW/ RATIO	1155/ 87
SCROTAL	32.5
ADG	3.2

If you like Cattle with lots of eye appeal and muscle shape, check this guy out. Goes back to final answer on the dam side.





LOT 34

34 ES LJ 53
ASA REG. # - 4186956

TEHAMA TAHOE B 767
LRS RAIITY 983 J
 LRS MS EAGLE 983 G
 SFG COWBOY LOGIC D 627
ES J 53
 ES C112

%	3/4 SM 1/4 AN
BD	2-11-23
ACT. BW	86
ADJ. WW/ RATIO	785/ 98
ADJ YW/ RATIO	1446/ 111
SCROTAL	38
ADG	4.1

If you're looking for a top end, blaze faced bull, this is your guy. Sharp looking bull from a first calf heifer with lots of rib shape and width.



LRS **RARITY**

LRS RARITY IS THE SIRE OF LOT 34



LOT 36



DEER VALLEY GROWTH FUND

DEER VALLEY GROWTH FUND IS THE SIRE OF LOT 35 AND LOT 36.

35 BR GROWTH FUND 633 L

BASIN PAYWEIGHT - AN REG - 18827828
DEER VALLEY GROWTH FUND -
 AN REG - 18827828
 DEER VALLEY RITA 36113

JMG COWBOY CUT 810 B
MISS COWBOY 633 D -
 3/4 SM 1/4 AN
 MISS UNIQUE 2-7086 Z

%	5/8 AN 3/8 SM
BD	3-27-23
ACT. BW	75
ADJ. WW/RATIO	693/92
ADJ YW/RATIO	1300/98
SCROTAL	33.5
ADG	3.8

A more moderate frame Growth Fund son, who is wide based, level hip and correct in his structure. Gained almost 4 pounds a day with the 75 pound birthweight.

36 BR GROWTH FUND 715 L

BASIN PAYWEIGHT - AN REG - 18827829
DEER VALLEY GROWTH FUND -
 AN REG - 18827828
 DEER VALLEY RITA 36113

RITO 416
MISS RITO 715 E - 3/4 SM 1/4 AN
 MISS TANKER 2-7008 Z

%	5/8 AN 3/8 SM
BD	3-23-23
ACT. BW	75
ADJ. WW/RATIO	727/96
ADJ YW/RATIO	1281/96
SCROTAL	35.5
ADG	3.5

This bull is one of my top picks in the entire sale. The Growth fund has been very popular for many years and this bull does not disappoint.



LOT 38

37 BR RIGHT TIME D-54 L

ES RIGHT TIME FA 110-4
KRJ ARLISS H 085 - PB SM REG.
3786487
 KRJ A3106
 ES LOADED BU56-1
ES D54 - 3/4 SM 1/4 AN
 ES A6

%	7/8 SM 1/8 AN
BD	4-21-23
ACT. BW	80
ADJ. WW/RATIO	828/ 109
ADJ YW/RATIO	1344/ 101
SCROTAL	33
ADG	3.2

Lotta good in this bull. Over 800 pounds and adjusted weaning weight with both weaning and yearling weight ratios over 100. I really like these Right Time cattle.

38 BR RIGHT TIME 016 L

ES RIGHT TIME FA 110-4
KRJ ARLISS H 085 - PB SM
REG. 3786487
 KRJ A3106
 PROFIT
BAILEY'S DGDC DREAMER
016 H - PB SM
 BAILEY'S MS DREAMY 946 W

%	PB SM
BD	4-14-23
ACT. BW	91
ADJ. WW/RATIO	850/ 106
ADJ YW/RATIO	1275/ 98
SCROTAL	35.5
ADG	2.7

Lot 38 is a bull that grabs your attention when you see him roaming through the pen. Being a purebred with this much exntntion through his front 1/3 is astounishing. His young dam has made her way into the donor pen and we could not be more excited for the future of 016.

39 BR RIGHT TIME H-48 L

ASA REG. # - 4280603

ES RIGHT TIME FA 110-4
KRJ ARLISS H 085 - PB SM
REG. 3786487
 KRJ A3106
 ES RIGHT TIME FA 110-4
ES H48 - PB SM
 KS BLACK DIAMOND W992

%	PB SM
BD	04-10-23
ACT. BW	87
ADJ. WW/RATIO	772/ 96
ADJ YW/RATIO	1251/ 96
SCROTAL	33.5
ADG	3.0

This purebred Simmental bull checks all the boxes: muscular, rugged, athletic. Sure to put his stamp on your next calf crop.



BRADY HAD THE GRAND CHAMPION MARKET ANIMAL AT WESTERN JUNIOR LIVESTOCK SHOW.



HOC BROKER

BROKER IS THE SIRE TO LOT 40 & LOT 41.



C22 IS THE DONOR DAM OF LOT 40 & LOT 41.

40 BR BROKER 88 L

SVF STEEL FORCE S 701
MR. HOC BROKER - PB SM - REG.
2531081
 JM BF H 25
 SOOLINE MOTIVE
C-22
 SAV BISMARCK

%	1/2 SM 1/2 AN ET
BD	3-29-23
ACT. BW	92
ADJ. WW/RATIO	754/100
ADJ YW/RATIO	1358/102
SCROTAL	34
ADG	3.8

Lots 40 and 41 are the result of an embryo purchase from Caffee Ranch near Wessington Springs, SD. I have always been impressed with Broker cattle, so when I had the opportunity to purchase these eggs I jumped on it. I believe these two brothers are a combination of added frame shape, structural presence and eye appeal.

41 BR BROKER 89 L

SVF STEEL FORCE S 701
MR. HOC BROKER - PB SM - REG.
2531081
 JM BF H 25
 SOOLINE MOTIVE
CR MISS C 22
 SAV BISMARCK

%	1/2 SM 1/2 AN ET
BD	3-23-23
ACT. BW	92
ADJ. WW/RATIO	755/100
ADJ YW/RATIO	1295/98
SCROTAL	37
ADG	3.4

Lots 40 and 41 are the result of an embryo purchase from Caffee Ranch near Wessington Springs, SD. I have always been impressed with Broker cattle, so when I had the opportunity to purchase these eggs I jumped on it. I believe these two brothers are a combination of added frame shape, structural presence and eye appeal.



TJ FRANCHISE

TJ FRANCHISE IS THE GRANDSIRE TO LOTS 42-48

42 BR LEGACY 0193 L

TJ FRANCHISE 451 D
DJF LEGACY J198 - 3/4 SM 1/4 AN
REG 3929118
 DJF A 3118

RBM NEXT STEP D528
MISS NEXT STEP 0193 H -
3/4 AN 1/4 SM
 MISS COMPASS 8041 F

%	1/2 SM 1/2 AN
BD	4-6-23
ACT. BW	83
ADJ. WW/RATIO	905/ 113
ADJ YW/RATIO	1313/ 101
SCROTAL	33.5
ADG	2.6

A half blood bull that has over a 900 pound adjusted weaning rate and both weaning weight and yearling weight ratios are over 100. Lotta power in this bull's pedigree.

43 BR LEGACY 0131 L

TJ FRANCHISE 451 D
DJF LEGACY J198 - 3/4 SM 1/4 AN
REG 3929118
 DJF A 3118

DEER VALLEY GROWTH FUND
MISS GROWTH FUND 0131 H - 3/4 AN
1/4 SM
 MISS COMMANDER BOND 2472

%	1/2 SM 1/2 AN
BD	3-17-23
ACT. BW	95
ADJ. WW/RATIO	888/ 110
ADJ YW/RATIO	1360/ 104
SCROTAL	33.5
ADG	3.0

When you study this bull and put him in motion, he's hard to pass up. Over 100 on weaning and yearling weight ratios and an 888 pound adjusted weaning weight ratio. Lots to offer in this pedigree.

44 BR LEGACY 0115 L

TJ FRANCHISE 451 D
DJF LEGACY J198 - 3/4 SM 1/4 AN
REG 3929118
 DJF A 3118

MOHNEN CROWN ROYAL 316
MISS CROWN ROYAL 0115 H -
3/4 AN 1/4 SM
 MISS COWBOY 8063 F

%	1/2 SM 1/2 AN
BD	3-23-23
ACT. BW	95
ADJ. WW/RATIO	874/ 109
ADJ YW/RATIO	1219/ 93
SCROTAL	34.5
ADG	2.2

An outstanding half blood goes back to Crown Royal on the dam side. You'll want to keep every replacement out of this bull. The Crown Royal females are some of our top producers.



AT WESTERN JUNIOR LIVESTOCK SHOW, BRADY HAD THE OVERALL GRAND CHAMPION FEEDER HEIFER WITH THIS ONE THEY RAISED.



LOT 48

45 BR LEGACY 024 L

TJ FRANCHISE 451 D
DJF LEGACY J198 - 3/4 SM 1/4 AN
REG 3929118
 DJF A 3118

DEER VALLEY GROWTH FUND
MISS GROWTH FUND 024 H - 3/4 AN 1/4 SM
 MISS DRIVER 1-7023 Y

A real complete made half blood bull with lots of performance. Has Growth Fund on the dam side. No faults on this bull.

%	1/2 SM 1/2 AN
BD	3-20-23
ACT. BW	83
ADJ. WW/RATIO	800/ 99
ADJ YW/RATIO	1196/ 92
SCROTAL	33.5
ADG	2.5

46 BR LEGACY 055 L

TJ FRANCHISE 451 D
DJF LEGACY J198 - 3/4 SM 1/4 AN
REG 3929118
 DJF A 3118

MOGK SURE SHOT
MISS SURE SHOT 055 H - AN
 MISS FOCUS 764 T

A more moderate framed bull that is higher percentage. This Angus bull posted an 810 pound adjusted weaning weight and 101 on his weaning weight ratio.

%	5/8 AN 3/8 SM
BD	3-24-23
ACT. BW	87
ADJ. WW/RATIO	810/ 101
ADJ YW/RATIO	1187/ 91
SCROTAL	32.5
ADG	2.4

47 BR LEGACY 069 L

TJ FRANCHISE 451 D
DJF LEGACY J198 - 3/4 SM 1/4 AN
REG 3929118
 DJF A 3119

W/C BANKROLL 811 D
MISS BANKROLL 069 H - PB SM
 DOUBLE J MISS U828

Three-quarter blood Simmental bull with only an 80 pound birthweight. Over 700 pounds and adjusted weaning weight with the dam being sired by the very popular Bankroll.t

%	3/4 SM 1/4 AN
BD	3-22-23
ACT. BW	80
ADJ. WW/RATIO	710/ 88
ADJ YW/RATIO	1226/ 94
SCROTAL	34
ADG	3.2

48 BR LEGACY 0-813 L

TJ FRANCHISE 451 D
DJF LEGACY J198 - 3/4 SM 1/4 AN
REG 3929118
 DJF A 3118

MISS 0813 H - 3/4 SM 1/4 AN

This blaze face bull has a really good disposition. Gained over 3 pounds a day, has a moderate birthweight of 83 pounds, and I really admire this bulls depth in his lower one-third.

%	3/4 SM 1/4 AN
BD	3-13-23
ACT. BW	83
ADJ. WW/RATIO	709/ 88
ADJ YW/RATIO	1225/ 94
SCROTAL	36
ADG	3.2

49 BR TURNPIKE 782 L

RUBY'S TURNPIKE 771 E
JMG TURNPIKE 714 G - PB SM REG.
3687106
 JMG MISS IMPERIAL 533 C
 MR. DOUBLE XL 320
MISS XXL 782 L - 3/4 AN 1/4 SM
 MISS FINAL ANSWER 569 C

%	3/8 SM 5/8 AN
BD	4-13-23
ACT. BW	87
ADJ. WW/RATIO	885/ 117
ADJ YW/RATIO	1271/ 96
SCROTAL	34
ADG	2.4

Wow! 885 pound adjusted weaning weight and 117 for weaning weight ratio. A bull that's real nice made through his front 1/3.

50 BR TURNPIKE 307 L

RUBY'S TURNPIKE 771 E
JMG TURNPIKE 714 G - PB SM
REG. 3687106
 JMG MISS IMPERIAL 533 C
 MR. REFLECTION 9046 W
MISS REFLECTION 3073 A -
3/4 AN 1/4 SM
 MISS HARB HI PLAINS 071 X

%	3/8 SM 5/8 AN
BD	4-25-23
ACT. BW	78
ADJ. WW/RATIO	867/ 115
ADJ YW/RATIO	1222/ 92
SCROTAL	32.5
ADG	2.2

A more moderate frame bull. Really clean up through his front 1/3 Goes back to a high producing Reflection cow on the dam side.

51 BR TURNPIKE 306 L

RUBY'S TURNPIKE 771 E
JMG TURNPIKE 714 G - PB SM REG.
3687106
 JMG MISS IMPERIAL 533 C
 MR. DRIVER 1005 Y
MISS DRIVER 3039 A -
1/2 SM 1/2 AN
 MISS FREIGHT TRAIN 9034 W

%	3/4 SM 1/4 AN
BD	4-15-23
ACT. BW	79
ADJ. WW/RATIO	860/ 114
ADJ YW/RATIO	1214/ 92
SCROTAL	34.5
ADG	2.2

One of the youngest bulls in the sale, but yet still had 867 pounds for an adjusted weaning weight and only a 78 pound birthweight.



NO ONE LIKES COMING TO THE FARM AND WORKING CATTLE MORE THAN COUSIN SIDNEY BEITELSPACHER!

RUBY'S Turnpike



RUBY'S TURNPIKE IS THE GRANDSIRE OF LOTS 49, 50 & 51.



LKCC **BOLD VENTURE**

LK CC BOLD VENTURE IS THE GRANDSIRE OF LOT 52.



LOT 52

52 BR JUGGERNAUT 317 L

LKCC BDD VENTURE 194 F
NEW TREND JUGGERNAUT 3 J -
REG. 3966364
 NEW TREND I'M A TEN 10 D

JMG COWBOY CUT 810 B
MISS COWBOY CUT 8029 F -
1/2 SM 1/2 AN
 MISS BANDO 3099 A

%	3/4 SM 1/4 AN
BD	4-18-23
ACT. BW	90
ADJ. WW/RATIO	791/ 105
ADJ YW/RATIO	1273/ 96
SCROTAL	33
ADG	3.0

New Trend Juggernaut is a bull that I purchased from New Trend Cattle Company out of Canada. Juggernaut is a herdsure that we have began to use on some of our smaller angus cross cows to add frame and muscle shape. I really like this lot 52 bull and believe he will go to work on a variety of cows. Just a mid April bull.



WC **BANKROLL**

WC BANKROLL IS THE GRANDSIRE OF LOT 53.

53 BR BANKROLL 982 L

W/C BANKROLL 811 D
PINKERTON BANKROLL -
7/8 SM 1/8 AN
 BFJV MS BOTTOMLINE E020

MR. HOC BROKER
MISS BROKER 982 G -
1/2 SM 1/2 AN
 MISS REFLECTION 1-782 Y

%	3/4 SM 1/4 AN BWF
BD	4-28-23
ACT. BW	84
ADJ. WW/RATIO	922/ 115
ADJ YW/RATIO	1342/ 103
SCROTAL	35
ADG	2.6

This black white face Bankroll son with Broker on the dam side has a lot of performance plus maternal traits. This bull is extremely good profiling.



LOT 54 | LOT 54 HAS A BIRTHWEIGHT OF 71

54 ES L J 138
ASA # 4186929

EGL FIRESTEEL 103 F
CLRS JERICHO 336 J
 CLRS ALL EXCELLENCE 31
 SFG COWBOY LOGIC D 627
ES J 138
 ES A 85

Lot 54 is a one of my favorite simmental heifer bull prospects in the offering. This bull has added width of body which you dont find in every heifer bull. Backed by the popular CLRS Jericho.

%	3/4 SM 1/4 AN
BD	2-5-23
ACT. BW	71
ADJ. WW/RATIO	620/ 77
ADJ YW/RATIO	1079/ 83
SCROTAL	
ADG	2.9



CLRS
JERICHO

CLRS JERICHO IS THE SIRE OF LOT 54



LOT 55

55 BR BENOIT 062 L

E & B TREASURE 951
SVA BENOIT 465 - AN REG -
20153910
 SPRING VALLEY PRINCESS 1446

RAML SURE SHOT 6343
MISS SURE SHOT 062 H - 3/4 AN
1/4 SM
 MISS COWBOY CUT 776 E

%	7/8 AN 1/8 SM
BD	3-22-23
ACT. BW	73
ADJ. WW/RATIO	958/ 119
ADJ YW/RATIO	1383/ 106
SCROTAL	35
ADG	2.7

You wanna make sure to check this guy out. Calving ease with lots of performance. Adjusted weaning weight of 958 and a weaning weight ratio of 119. Put all that performance together and he only has a 73 pound birthweight. Could be used on larger framed heifers.

56 BR BENOIT 0128 L

E & B TREASURE 951
SVA BENOIT 465 - AN REG -
20153910
 SPRING VALLEY PRINCESS 1446

DEER VALLEY GROWTH FUND
MISS GROWTH FUND 0128 H - 3/4 AN
1/4 SM
 MISS 10 X -5069 C

%	7/8 AN 1/8 SM
BD	3-10-23
ACT. BW	78
ADJ. WW/RATIO	742/ 92
ADJ YW/RATIO	1487/ 114
SCROTAL	34
ADG	4.6

This is a calf I've liked all summer. A 7/8 Angus that goes back to Growth Fund on the dam side. Has 114 for a yearling weight ratio and gained over 4 1/2 pounds a day. Be sure to find this bull sale day - he won't disappoint!

57 BR BENOIT 0127 L

E & B TREASURE 951
SVA BENOIT 465 - AN REG -
20153910
 SPRING VALLEY PRINCESS 1446

DEER VALLEY GROWTH FUND
MISS GROWTH FUND 0127 H - 3/4 AN
1/4 SM
 MISS UPGRADE 593 C

%	7/8 AN 1/8 SM
BD	4-18-23
ACT. BW	80
ADJ. WW/RATIO	846/ 105
ADJ YW/RATIO	1366/ 105
SCROTAL	34.5
ADG	3.3

Hybrid vigor with this bull. Higher percentage Angus with loads of muscle and style. Groth Fund on dam side. Lots of performance.

58 BR BENOIT 084 L

E & B TREASURE 951
SVA BENOIT 465 - AN REG -
20153910
 SPRING VALLEY PRINCESS 1446

RAML LOCK DOWN 6911 D
MISS LOCKDOWN 084 H - 3/8 SM
5/8 AN
 MISS BROKER 417 B

%	7/8 AN 1/8 SM
BD	4-13-23
ACT. BW	78
ADJ. WW/RATIO	749/ 93
ADJ YW/RATIO	1331/ 102
SCROTAL	37
ADG	3.6

I sure do like these Bennett calves. They have lots of natural muscle shape and dimension. A higher percentage Angus bull with only a 78 pound birthweight and would be suitable for heifers. Gained over 3 1/2 pounds a day.

59 BR BENOIT 0132 L

E & B TREASURE 951
SVA BENOIT 465 - AN REG -
20153910
 SPRING VALLEY PRINCESS 1446

RAML LOCK DOWN 6911 D
MISS LOCK DOWN 0132 H - 3/8 SM
5/8 AN
 MISS DREAM CATCHER 261 Z

%	7/8 AN 1/8 SM
BD	3-22-23
ACT. BW	86
ADJ. WW/RATIO	709/ 88
ADJ YW/RATIO	1262/ 97
SCROTAL	32
ADG	3.5

A real attractive higher Angus bull with lots of length of the body. Gained 3 1/2 pounds a day. Sure to stretch out your next calf crop.

60 BR BENOIT 045 L

E & B TREASURE 951
SVA BENOIT 465 - AN REG -
20153910
 SPRING VALLEY PRINCESS 1446

DFJ H086
MISS PROFIT 045 H - 1/2 SM 1/2 AN
 MISS 5079 C

%	3/4 AN 1/4 SM
BD	4-25-23
ACT. BW	77
ADJ. WW/RATIO	930/ 116
ADJ YW/RATIO	1282/ 98
SCROTAL	34
ADG	2.2

The youngest bull in the offering. This guy has a lot presence and will work wonders on heifers. Do not overlook this end of april calf. His dam is a young producer that goes back to the \$400,000 profit simmental bull.



DEER VALLEY

Optimum

DEER VALLEY OPTIMUM IS
THE SIRE OF LOT 61 AND 62

61 BR OPTIMUM 118 L

	%	3/4 AN 1/4 SM
DEER VALLEY GROWTH FUND	BD	3-13-23
DEER VALLY OPTIMUM - AN REG -	ACT. BW	63
19466633	ADJ. WW/ RATIO	897/ 112
GAR PROGRESS 830	ADJ YW/ RATIO	1322/ 101
KRJ DAKOTA OUTLAW G974	SCROTAL	34
MISS OUTLAW 118 J - 1/2 SM 1/2	ADG	2.7
AN		
MISS FINAL ANSWER 745 E		

If you're looking for some fresh new genetics for your herd, check this guy out. One of the few Optimum bulls in the sale with a 63 pound birthweight. Buy with confidence.

62 BR OPTIMUM 1060 L

	%	3/4 AN 1/4 SM
DEER VALLEY GROWTH FUND	BD	3-15-23
DEER VALLY OPTIMUM - AN REG -	ACT. BW	85
19466633	ADJ. WW/ RATIO	768/ 96
GAR PROGRESS 830	ADJ YW/ RATIO	1463/ 112
YARDLEY STEP AHEAD D - 380	SCROTAL	36.5
MISS STEP UP 1060 J - 1/2 SM 1/2	ADG	4.3
AN		
MISS COMPASS 7098 E		

Lot 62 goes back to a first calf Step Up cow who knocked it out of the park on her first calf. Lot 62 is a combination of our proven Yardley Step Up herdsire with the look and presence of the popular Optimum bull. High percentage angus bull that will add pounds to your next calf crop!

63 BR RAINFALL 1014 L

COLEMAN CHARLO 0256
SAV RAINFALL 6846 - AN REG -
18578963

SAV BLACKCAP MAY 4136

YARDLEY STEP AHEAD D-380

MISS STEP UP 1014 J - 3/4 SM 1/4
AN

MISS COWBOY 7064 E

%	5/8 AN 3/8 SM
BD	3-21-23
ACT. BW	83
ADJ. WW/ RATIO	837/ 104
ADJ YW/ RATIO	1389/ 106
SCROTAL	34.5
ADG	3.4

Another young Step Up daughter matched up with the SAV Rainfall who needs no introduction. This bull has style and checks all the boxes on paper. Out of a first calf heifer.



64 BR RAINFALL 123 L

COLEMAN CHARLO 0256
SAV RAINFALL 6846 - AN REG -
18578963

SAV BLACKCAP MAY 4136

CONNELLY FINAL SOLUTION

MISS FINAL SOLUTION 123 J - 1/2
SM 1/2 AN

MISS BROKER 955 G

%	3/4 AN 1/4 SM
BD	3-21-23
ACT. BW	77
ADJ. WW/ RATIO	813/ 101
ADJ YW/ RATIO	1227/ 94
SCROTAL	35
ADG	2.6

A real attractive, Rainfall son that would definitely be suitable for heifers. Goes back to Final Solution on the dam side and had only a 77 pound birthweight.

65 BR RAINFALL 120 L

COLEMAN CHARLO 0256
SAV RAINFALL 6846 - AN REG -
18578963

SAV BLACKCAP MAY 4136

NEXT STEP E 20

MISS NEXT STEP 120 J - 3/4 AN 1/4
SM

MISS TANKER 415 B

%	7/8 AN 1/8 SM
BD	3-22-23
ACT. BW	85
ADJ. WW/ RATIO	689/ 86
ADJ YW/ RATIO	1466/ 112
SCROTAL	37
ADG	4.8

This Rainfall son is more moderate sized, yet accelled at his average daily gain, going nearly 5 pounds per day. One of the top average daily gaining bulls in the entire offering.



**Bruce Gordon
 & Randy Reuer**



Ashton Hartling

66 BR RAINFALL 117 L

COLEMAN CHARLO 0256
SAV RAINFALL 6846 - AN
REG - 18578963

SAV BLACKCAP MAY 4136

KRJ DAKOTA OUTLAW G 974

MISS OUTLAW 117 J - PB SM
 KRDL CAEDENCE C-37

%	1/2 AN 1/2 SM BWF
BD	3-26-23
ACT. BW	83
ADJ. WW/ RATIO	629/ 78
ADJ YW/ RATIO	1190/ 92
SCROTAL	33
ADG	3.5

A moderate framed bull that is out of a Dakota Outlaw x C37 heifer! Very fancy type of bull that will work on heifers. This guy will add look and presence to your next calf crop.





LOT 69

67 BR SURE SHOT 310 L

RAML SURE SHOT 6343 - AN
BR MR. SURE SHOT 130 J - 3/4 AN
1/4 SM
 BR MISS 8084 1/2 SM 1/2 AN

CHESTNUT KNOCKOUT 556
MISS KNOCKOUT 9029 G - 3/4 AN
1/4 SM
 MISS FINAL ANSWER 5045 C

%	3/4 AN 1/4 SM
BD	4-20-23
ACT. BW	65
ADJ. WW/ RATIO	840/ 104
ADJ YW/ RATIO	1291/ 99
SCROTAL	32
ADG	2.8

A more moderate framed Sure Shot son with only a 65 pound birthweight. Definitely suitable for heifers. Has an 840 pound adjusted weaning weight and 104 for weaning weight ratio. Buy with confidence here.

68 BR SURE SHOT 326 L

RAML SURE SHOT 6343 - AN
BR MR. SURE SHOT 130 J - 3/4 AN
1/4 SM
 BR MISS 8084 1/2 SM 1/2 AN

JMG COWBOY CUT 810 B
MISS COWBOY 9034 G - 1/2 SM
1/2 AN
 MISS 083 X

%	3/8 SM 5/8 AN
BD	4-25-23
ACT. BW	80
ADJ. WW/ RATIO	788/ 98
ADJ YW/ RATIO	1219/ 93
SCROTAL	32
ADG	2.7

A more moderate framed Sure Shot son. An end of April calf that almost has an 800 pound adjusted weaning weight.

69 BR BLUE PRINT 903 L

WOODHILL BLUEPRINT
WOODHILL BLUEPRINT D581 - AN
REG - 19812631
 HLCC BLACKBIRD B 561 - D 581

W/C NIGHT WATCH 84 E
MISS NIGHT WATCH 903 G - 1/2 SM
1/2 AN
 MISS EXTRA 205 Z

%	3/4 AN 1/4 SM
BD	3-23-23
ACT. BW	84
ADJ. WW/ RATIO	784/ 102
ADJ YW/ RATIO	1374/ 105
SCROTAL	34
ADG	3.7

This Blueprint bull has a lot to offer. Over 100 on both weaning and yearling weight ratios. Gained 3.7 pounds a day. Larger framed with lots of eye appeal.



Chris Mitchell
Woodhill
BLUEPRINT

WOODHILL BLUEPRINT IS THE GRAND SIRE OF LOT 69



LOT 70

70 BR KNOW HOW 603 L

	% AN
BD	3-27-23
ACT. BW	XXXXXXXX
ADJ. WW/RATIO	681/95
ADJ YW/RATIO	1303/106
SCROTAL	36
ADG	3.9

HOOVER NO DOUBT
HOOVER KNOW HOW - AN
REG - 18543645
 BLACKCAP EMPRESS ELSTON L266

MR. GRANGER 0414 Y
MISS GRANGER 603 D - AN
REG - 19364648
 MISS SURE SHOT 408 B

A Knowhow son that is larger framed. Gained right at four pounds a day. Lots of width and mass in this bull.

71 BR KNOW HOW 904 L

	% AN
BD	4-1-12
ACT. BW	86
ADJ. WW/RATIO	773/101
ADJ YW/RATIO	1335/102
SCROTAL	36.5
ADG	3.5

WOODHILL BLUEPRINT
WOODHILL BLUEPRINT D581 - AN
REG - 19812631
 HLCC BLACKBIRD B 561 - D 581

W/C NIGHT WATCH 84 E
MISS NIGHT WATCH 903 G - 1/2 SM
1/2 AN
 MISS EXTRA 205 Z

One of my favorite Angus bulls in the entire offering. Sired by the Great Knowhow. It goes back to Southern charm on the dam side. Both weaning and yearling are over 100 on the ratios and gained a modest 3 1/2 pounds a day. A deep, soggy bull that's easy flashing.



Hoover
KNOWHOW

**HOOVER KNOWHOW IS
 THE SIRE OF LOT 70 AND 71**

72 BR ALPHA 866 L

DAMERON FIRST CLASS
COLLISON ALPHA 028 - AN REG -
19893755
 CS GEROGINA 919
 CHESTNUT KNOCKOUT 556
MISS KNOCKOUT 866 F - AN REG
19364655
 MISS ROYAL 407 B

% AN	
BD	4-2-23
ACT. BW	91
ADJ. WW/RATIO	744/ 103
ADJ YW/RATIO	1325/ 108
SCROTAL	34.5
ADG	3.6

It really like these Alpha calves. They are moderate in size. Has great numbers - both weaning and yearling are over 100. Gained 3.6 pounds a day. Has more birthweight than normal, but with the winter we had last year, we did have a lot of cows go over their gestations.



COLLISON *Alpha*

COLLISON ALPHA IS THE SIRE OF LOT 72 AND 73

73 BR ALPHA 362 L

DAMERON FIRST CLASS
COLLISON ALPHA 028 - AN REG -
19893755
 CS GEROGINA 919
 SA BROADSIDE 1411
D 1411 HAILEY A -362 - AN REG
17653272
 D 8193 HAILEY X087

% AN	
BD	3-25-23
ACT. BW	77
ADJ. WW/RATIO	705/ 98
ADJ YW/RATIO	1063/ 86
SCROTAL	33
ADG	2.2

Lot 74 is a natural from our A362 donor cow. A362 has generated multiple high selling bulls and females that always find their way into the replacemet pen. Use this bull confidently on heifers and trust in the bloodline here.

74 BR OPTIMUM 9-318 L

DEER VALLEY GROWTH FUND
DEER VALLEY OPTIUM - AN
REG 19466633
 GAR PROGRESS 830
 CONNEALY FINAL SOLUTION
MISS FINAL SOLUTION 1-9-318 J -
AN REG
 MISS KATINKA KAY 9365 G

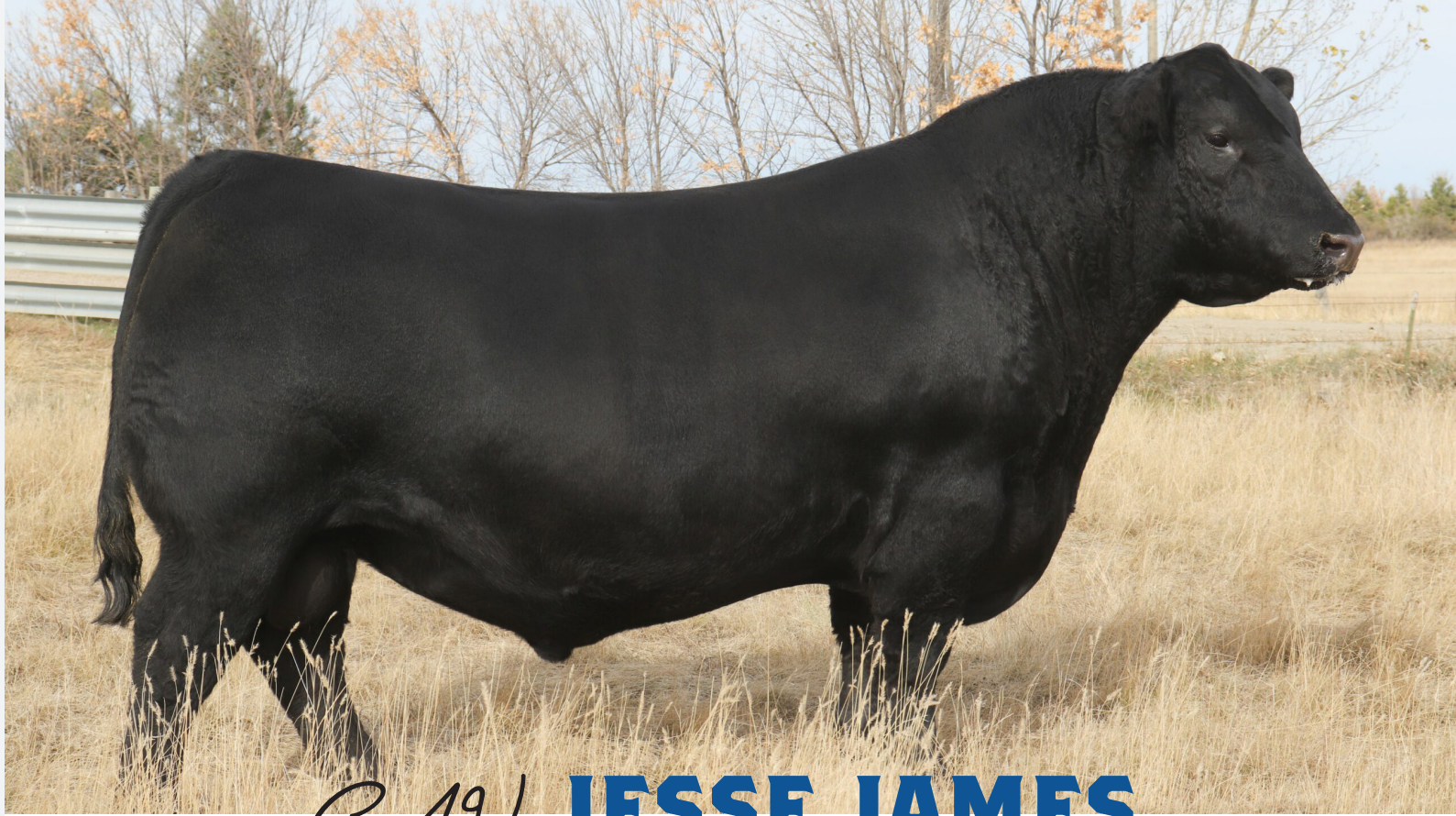
% AN	
BD	3-18-23
ACT. BW	84
ADJ. WW/RATIO	656/ 86
ADJ YW/RATIO	1157/ 88
SCROTAL	34
ADG	3.1

The only Optimum Angus bull in the sale. Suitable for heifers.

DEER VALLEY *Optimum*

DEER VALLEY OPTIMUM IS THE SIRE OF LOT 74





SAV **JESSE JAMES**
 SAV JESSE JAMES IS THE SIRE OF LOT 75 AND 76

75 BR JESSE JAMES 908 L

AAA # - 20817799

SAV RENOVATION 6823
SAV JESSE JAMES 0968 - AN
REG - 19860276
 SAV BLACKCAP MAY 8961
 SILVEIRAS STYLE 9303
MISS STYLE 908 G - AN
REG - 19745157
 SOO LINE ROSE 1019

	% AN
BD	3-31-23
ACT. BW	87
ADJ. WW/RATIO	784/ 102
ADJ YW/RATIO	1395/ 106
SCROTAL	35.25
ADG	3.8

One of my favorite angus bulls in the line up. When you have Silveras Style on the dam side good things are bound to happen, and they sure did! This how has produced 2 of our top selling angus bulls in previous years. Bid with confidence on this one!

76 BR JESSE JAMES 1001 L

SAV RENOVATION 6823
SAV JESSE JAMES 0968 - AN REG -
19860276
 SAV BLACKCAP MAY 8961
 TR MR. COMRADE 6044 D
MISS COMRADE 1001 J - AN COM
 MISS 10X - 8001 F

	% AN
BD	3-16-23
ACT. BW	80
ADJ. WW/RATIO	738/ 96
ADJ YW/RATIO	1367/ 104
SCROTAL	34.5
ADG	3.9

Another big stout angus bull who gained almost 4 pounds a day! This guy is a unit that you will want to see in person.

LOT 75



LOT 76





SAV Rainfall

SAV RAINFALL IS THE SIRE OF LOT 63, 64, 65, 66, AND 77

77 BR RAINFALL 102 L

COLEMAN CHARLO 0256
SAV RAINFALL 6846 - AN REG - 18578963
 SAV BLACKCAP MAY 4136
 TR MR. COMRADE 6044 - D
MISS COMRADE 102 J - AN COM
 MISS CAVALRY 403 B

%	AN COM
BD	4-13-23
ACT. BW	75
ADJ. WW/RATIO	857/107
ADJ YW/RATIO	1390/106
SCROTAL	35
ADG	3.3

Buy with confidence this bull - checks all the boxes! Very suitable for heifers. Over 850 pounds adjusted weaning and well over 100 on adjusted weaning weigh ratio and yearling weight ratio, with only a 75 pound birthweight to boot.

78 BR BLUE PRINT 0102 L

WOODHILL BLUEPRINT
WOODHILL BUEPRINT D 581 - AN REG - 19812631
 HLCC BLACKBIRD B 561 - D 581
 NEXT STEP E 20
MISS NEXT STEP 0102 H - AN
 MISS TOMBSTONE 8000 F

%	AN
BD	4-24-23
ACT. BW	71
ADJ. WW/RATIO	876/114
ADJ YW/RATIO	1307/99
SCROTAL	35
ADG	2.7

114 weaning rate ratio with one of the lowest birthweights in the sale. Bulls like this make calving easy and even more rewarding when it comes time to sell in the fall!

SAV JESSE JAMES IS THE SIRE OF LOT 75 AND 76



Woodhill BLUEPRINT

WOODHILL BLUEPRINT IS THE GRANDSIRE OF LOTS 78-82

79 BR BLUE PRINT 0109 L

WOODHILL BLUEPRINT
WOODHILL BUEPRINT D 581 - AN REG - 19812631
 HLCC BLACKBIRD B 561 - D 581
 DEER VALLEY GROWTH FUND
MISS GROWTH FUND 0109 H - AN
 MISS REFLECTION 213 Z

%	AN
BD	4-15-23
ACT. BW	79
ADJ. WW/RATIO	827/108
ADJ YW/RATIO	1373/104
SCROTAL	34.5
ADG	3.4

Suitable for heifers with a 71 pound birthweight. This end of April calf topped the scale with an 876 pound adjusted weaning weight and an outstanding 114 for weaning weight ratio.

80 BR BLUE PRINT 901 L

WOODHILL BLUEPRINT
WOODHILL BUEPRINT D 581 - AN REG - 19812631
 HLCC BLACKBIRD B 561 - D 581
 MOGK SURE SHOT
MISS SURE SHOT 901 G - AN
 MISS IN FOCUS 767 T

%	AN
BD	4-12-23
ACT. BW	81
ADJ. WW/RATIO	786/103
ADJ YW/RATIO	1216/93
SCROTAL	32
ADG	2.7

One of the younger bulls on the sale who was still 103 weaning weight ratio. Suitable for heifers.

81 BR BLUEPRINT 010 L

WOODHILL BLUEPRINT
WOODHILL BLUEPRINT D 581 - AN
REG - 19812631
 HLCC BLACKBIRD B 561 - D 581

NEXT STEP E 20
MISS NEXT STEP 010 H - AN
 MISS IN FOCUS 767 T

	%	AN
BD	3-13-23	
ACT. BW	95	
ADJ. WW/RATIO	702/ 92	
ADJ YW/RATIO	1312/ 100	
SCROTAL	34.5	
ADG	3.8	

Rugged made high performance type of bull who will produce a sharp set of calves. Gained almost 4lbs a day and averaged right at 100 yearling weight ratio.

82 BR BLUE PRINT 9000 L

WOODHILL BLUEPRINT
WOODHILL BLUEPRINT D 581 - AN
REG - 19812631
 HLCC BLACKBIRD B 561 - D 581

GAR ASHLAND
MISS ASHLAND 900 G - AN
 MISS COMPASS 7006 E

	%	AN
BD	3-13-23	
ACT. BW	71	
ADJ. WW/RATIO	691/ 86	
ADJ YW/RATIO	1298/ 99	
SCROTAL	35.5	
ADG	3.8	

One of the biggest framed angus bulls in the offering who is still just a 71lb birth-weight. Use this guy to add frame and performance to next years calf crop!



CROWN
Royal
CROWN ROYAL IS THE SIRE OF LOT 81

83 BR CROWN ROYAL 508 L

BALDRIDGE MULLEN M 528
MOHNEN CROWN ROYAL 316 - AN
REG - 15530827
 MOHNEN JILT 1283

SAV FINAL ANSWER 0035
MISS FINAL ANSWER 508 C - AN
 MISS FOCUS 753 T

	%	AN
BD	4-1-23	
ACT. BW	85	
ADJ. WW/RATIO	734/ 97	
ADJ YW/RATIO	1280/ 96	
SCROTAL	38	
ADG	3.4	

Best Angus bull for last maybe? The only Crown Royal bull in the sale. Goes back to Final Answer on the dam side. Could be the sleeper of the entire sale!

2023 WAS A MEMORABLE YEAR FOR OUR FAMILY AND WE LOOK FORWARD TO WHAT IS IN STORE FOR 2024!





13418 328TH AVE
BOWDLE, SD 57428

**PLEASE BRING YOUR
CATALOG TO THE SALE!**

FEBRUARY 23, 2024 • 1:00 P.M.